

# M Short Throw Series

## M300XS and M300WS digital projectors

Easy to use and at the right price, M Short Throw Series projectors provide all the essential features that you need to connect with your audience.



### ESSENTIAL FEATURES FOR EDUCATIONAL FACILITIES

- **Plug and Play** intuitive setup and operation
- **Bright images** easily viewed in any application
- **Versatile, color-coded connections** to computer, video sources and external monitor
- **Automatic keystone correction technology** instantly projects a square image even when the projector is set up at a steep offset angle to the screen
- **Autosense™** intuitively syncs the projector with most computer signals and features one-touch image optimization
- **One-touch source changes and complete menu control** using the intuitive projector keypad
- **Powerful 10-watt speaker** provides volume needed for large rooms
- **Remarkable contrast ratio (2000:1)** enhances your image
- With **XGA and WXGA native resolutions**, high brightness up to 3000 lumens and patented NEC technologies, M Short Throw Series projectors display impressive image quality



### M Short Throw Series projectors vs. standard projectors

Short throw creates a 110" diagonal image from 3 feet, 6 inches, eliminating shadows on the screen along with projected light in the presenter's eyes created by traditional front projection systems

**Virtual Remote™ (DDC/CI)** over the VGA cable to control the projector directly from a computer without the need for additional control cables.



**Top cover lamp change** provides for easy lamp changes without removal of the projector from the mount.



**Built-in wall color correction presets** provide for adaptive color tone correction to display properly on non-white surfaces.

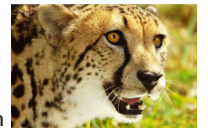


On a green wall...

BEFORE auto wall correction



AFTER auto wall correction



## DESIGNED WITH THE ENVIRONMENT IN MIND

- **Extended lamp life with ECO Mode™ technology** increases lamp life up to 5000 hours, while lowering power consumption
- **Power management** enables projector to automatically turn off when an incoming signal is not detected from any of the inputs
- **Auto Power On** via the RGB (15-pin) input connector when a signal is detected from a computer
- **Carbon savings meter** calculates the positive effects of operating the projector in ECO Mode, which is encouraged by an optional message at startup. A green ECO Mode button on the remote control makes the switch easy.
- **Quick start (3 to 4 seconds)** lets you begin presenting in seconds while quick shutdown (immediate power off with no cooling required after shutdown) ensures efficient energy usage
- **Sleep timer** can be set to automatically turn off the projector at set countdown times
- **Low power consumption** (0.2W in stand-by mode) minimizes energy costs



### 5000-hour filter life

NEC is committed to designing its products to provide long lifecycles. This commitment even extends to components within its products, including the improved filter. This virtually maintenance-free filter reduces the frequency at which cleaning is required, thereby decreasing your total cost of ownership.

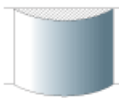


## SOFTWARE FEATURES

### Geometric Correction

Projecting an image isn't confined to a standard flat screen or wall with the NEC M Short Throw Series. Geometric correction allows these models to project an image on spheres, cylinders, corner angles and many more non-standard surfaces.

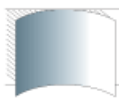
Vertical cylindrical convex screen



Horizontal cylindrical concave screen



Vertical cylindrical concave screen



Corner



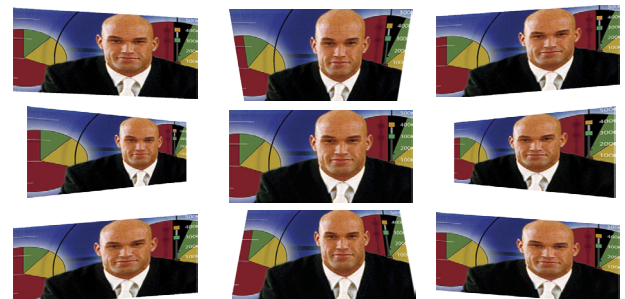
### DICOM SIM

DICOM Simulation enables users in medical environments to display accurate diagnostic images.



### Cornerstone

Enhanced keystone correction allows for horizontal, vertical and diagonal image correction for aligned images even when the projector is set up at an angle to the screen.



## GET CONNECTED WITH A WIDE SELECTION OF INPUTS

- **Dual computer inputs** ensure quick switching between presentations
- **Four audio inputs (two mini stereo, R/L and HDMI)** make it easy to add sound to enhance your presentations

### Remote control

Easy control from remote allows you to adjust lamp mode, aspect ratio, volume and image all with the touch of a button.



### HDMI input

Among the M Short Throw Series' wide selection of inputs is an HDMI w/HDCP for connecting to high-definition sources such as Blu-ray players, cable boxes, satellite receivers and personal computers.



### Variable audio-out

This input enables the remote control to be used to adjust volume of self-powered external speakers that are connected to the projector. In stand-by mode, the audio-out stays active, allowing the last input used to pass to the self-powered external speakers.



### USB Viewer

In instances when you'd prefer to leave your laptop behind for a presentation, M Short Throw Series projectors can deliver a solution. Using the presentation conversion software included with your projector, simply place your file onto a USB drive and plug it into the projector's USB port. This allows you to display images stored as .jpps from optional USB memory.



### USB input

Your connection options go even further with the M Short Throw Series. Connect your laptop or PC directly to the projector using the USB port and a standard USB cable.



## ADVANCED NETWORKING CAPABILITIES

- **Integrated RJ45 connection** for quick connection to the LAN (10/100 base-T capability)
- **Remote diagnostics** enable the user to monitor and make adjustments to the projector remotely
- **PC CTL 4.0** controls the power switching input selection and other functions while managing lamp usage and a variety of other vital information over the network. Email notification and projector scheduling for better asset management is included with the software.

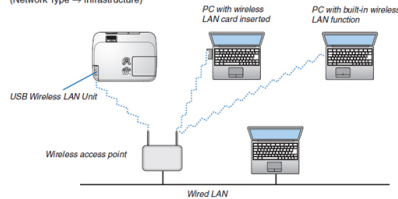
### Image Express Lite

Dedicated projector software provides wired and wireless data transmission via peer-to-peer or over the network.

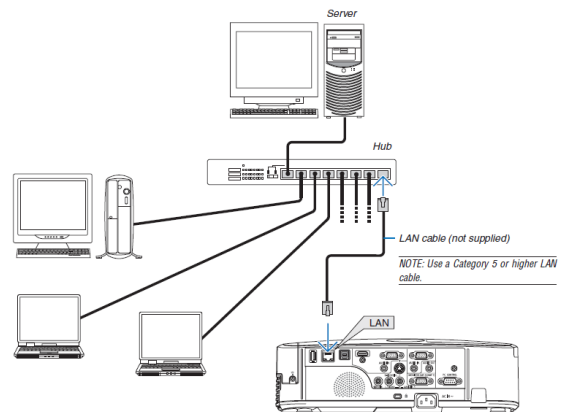
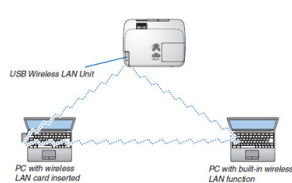


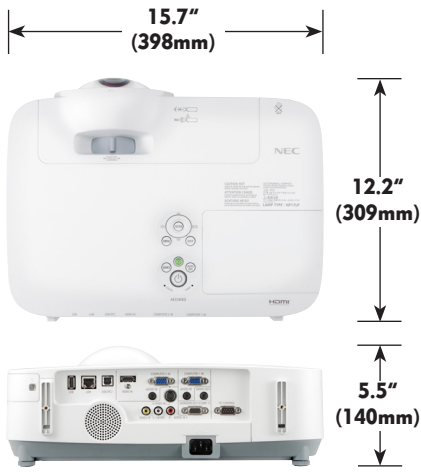
Wireless LAN module (optional)

Example of wireless LAN connection (Network Type → Infrastructure)



Example of wireless LAN connection (Network Type → Ad Hoc)





## UNIQUE FEATURES

**Advanced AccuBlend** ensures detailed images when non-native resolution sources are connected to the projector

**Built-in closed captioning** enables decoding and display of text information from a video

**64-step image magnification** with location control

**Countdown sleep timer** can be set to automatically turn off the projector

**Direct power-off** provides instantaneous shutdown of projector

## WARRANTY

Registered owners receive a 2-year parts and labor warranty including the first year of InstaCare. The lamp is covered for one year or 500 hours - whichever comes first. InstaCare provides the original owner one year of either limited 3-business-day repair/return or next-business-day exchange.

## IN THE BOX

Remote control, batteries, power cord, RGB signal cable, built-in lens cover, user's manual on CD-ROM, quick start guide, product registration card, security sticker

## Ordering Model Numbers

NP-M300XS  
NP-M300WS



## Specifications for M300XS & M300WS

<b>OPTICAL</b>	
Display Technology	M300XS: 0.63" LCD with MLA M300WS: 0.59" LCD with MLA
Native Resolution	M300XS: XGA 1024 x 768 M300WS: WXGA 1280 x 800
Maximum Light Output (lumens)	UXGA 1600 x 1200 3000 normal / Eco = approx. 75% of normal mode
Contrast Ratio	2000:1
Lamp Type	M300XS: 230W AC / 170W eco1 / 140W eco2 M300WS: 260W AC / 195W eco
Lamp Life (up to)	M300XS: 4000 hours normal / 5000 hours eco M300WS: 3000 hours normal / 3500 hours eco
Screen Size (diagonal)	M300XS: 60 - 110 in. / 1.52 - 2.79m M300WS: 56.2 - 104 in. / 1.47 - 2.64m
Throw Ratio	0.47:1
Projection Distance	M300XS: 1.9 - 3.6 ft. / 0.57 - 1.1m M300WS: 1.8 - 3.6 ft. / 0.57 - 1.1m
Projection Angle	37.3° - 38.6°
Lens	1.2
Zoom	Manual
Focus	F = 2, f = 6.4mm
F-#, f-#	
Keystone Correction	Automatic or manual +/- 20°
<b>SIGNAL COMPATIBILITY/CONNECTIVITY</b>	
Scan Rate	Horizontal 15 - 100 kHz / Vertical 50 - 120 Hz
Supported Video Standards	NTSC, NTSC4.43, PAL, PAL-60, PAL-M, PAL-N, SECAM
SD/HD Video Signal Compatibility	1080i, 1080p, 720p, 576p, 576i, 480p, 480i, Y/Cb/Cr component (with optional adapter - ADP-CV1E)
HDMI Signal Compatibility	VGA, SVGA, XGA, WXGA, SXGA, 480p, 576p, 720p, 1080i, 1080p
PC Signal Compatibility	VGA, SVGA, XGA, SXGA, SXGA+, UXGA
Macintosh Compatibility	Yes
Input/Output Terminals	
RGB 1 (analog)	15 pin
RGB 2 (analog)	15 pin
RGB 3 (digital)	HDMI
RGB 4 (digital)	USB A Type
Video 1	RCA
Video 2	S-Video
Audio 1	L/R RCA (shared by video sources)
Audio 2	1/8 in. stereo
Audio 3	1/8 in. stereo
Audio Out	mini stereo (Variable audio out)
Monitor Out	Yes
Audio	10W speaker
External Control	RS-232, IR, LAN, DDC/CI, USB, Wireless LAN (optional)
Sync Compatibility	Separate Sync / Composite Sync / Sync on G
<b>ELECTRICAL</b>	
Power Req.	100 - 240V AC, 50/60Hz
Input Current	M300XS: 3.4A / 1.5A M300WS: 3.9A / 1.7A
Power Consumption (Normal/ECO1 Mode/Standby Mode/Power Saving Mode)	M300XS: 311W / 239W / 8W / 0.2W M300WS: 358W / 271W / 8W / 0.2W
<b>MECHANICAL</b>	
Installation Orientation	Floor/Front, Floor/Rear, Ceiling/Front, Ceiling/Rear
Dimensions (WxDxH)	15.7 x 12.2 x 5.5 in. / 398 x 309 x 140mm
Net Weight	8.8 lbs. / 4 kg
Fan Noise	M300XS: 35 dB normal / 29 dB eco M300WS: 36 dB normal / 30 dB eco
Regulations	UL60950-1, CSA60950-1, FCC Part 15 Class B, ICES-03 Class B, NOM-001-SCFI-1993
<b>ENVIRONMENTAL</b>	
Operational Temp	41° - 104°F / 5° - 40°C
Humidity	20-80% non-condensing
Storage	14° - 122°F / -10° - 50°C
<b>ACCESSORIES</b>	
NP01MR	IR receiver enables PJ remote to control PC and MAC functions
NP02LM1	802.11b/g/n wireless LAN adapter
NP01CV	Input panel cover
SPKR30	Amplified 30 watt speaker
ADP-CV1E	Component video to VGA adapter
MP300CM	Ceiling mount
NP01UCM	Universal ceiling mount for projectors weighing less than 40 pounds
AEC00609	6 to 9 inch adjustable extension column for use with projector mount
AEC012018	12 to 18 inch adjustable extension column for use with projector mount
AEC0203	2 to 3 foot adjustable extension column for use with projector mount
AEC0305	3 to 5 foot adjustable extension column for use with projector mount
SCP200	Adjustable suspended ceiling plate for use with ceiling mount
NP16LP	Replacement lamp for M300XS
NP17LP	Replacement lamp for M300WS
RMT-PJ31	Replacement remote control
<b>WARRANTY PROGRAMS</b>	
NECEW1-MP	Extends term of parts and labor warranty to 3 years
NECEW2-MP	Extends term of parts and labor warranty to 4 years
ADVEXON1-MP	Extends term of InstaCare service program to 2 years
ADVEXON2-MP	Extends term of InstaCare service program to 3 years
Additional accessories are available, including screens, carts, mount accessories and replacement cables. Visit <a href="http://www.necdisplay.com">www.necdisplay.com</a> for details.	

Advanced AccuBlend, ECO Mode and Virtual Remote are trademarks of NEC Display Solutions. HDMI, the HDMI logo and High-Definition Multimedia Interface are trademarks or registered trademarks of HDMI Licensing LLC. All other brand or product names are trademarks or registered trademarks of their respective holders. Product specifications subject to change. 3/11 ver. 2.

©2011 NEC Display Solutions of America, Inc. All rights reserved.

## NEC Display Solutions

500 Park Boulevard, Suite 1100  
Itasca, IL 60143  
866-NEC-MORE

# NEC